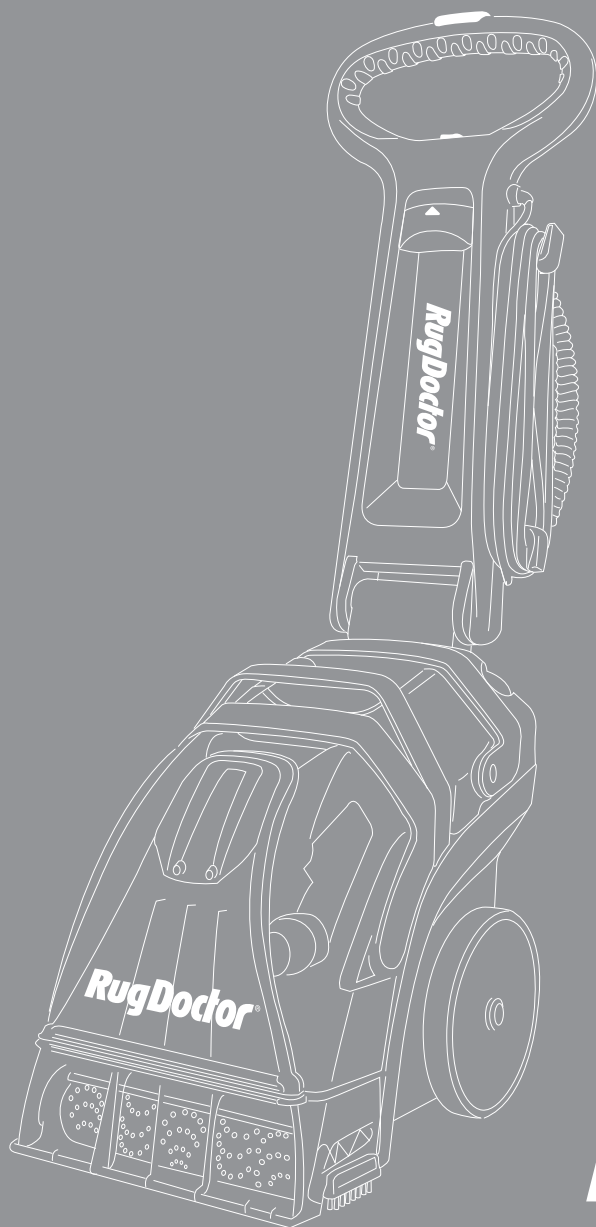


USER GUIDE

Deep Carpet Cleaner



RugDoctor

GUIDE CONTENTS

- 3 | Safety Instructions
- 4 | Product Parts & Components
- 6 | Getting Started
- 7 | Cleaning Carpets
- 8 | Cleaning with the Hand Tool
- 10 | Cleaning Upholstery
- 11 | Emptying the Waste Water | Refilling the Clean Water Tank
- 12 | Cleaning Up | Hand Tool Caddy
- 13 | Troubleshooting
- 14 | Warranty Information

Retain for your records: To save time if calling Customer Service for information about your Rug Doctor machine, it is recommended that you record your machine information here:

SERIAL # _____

DATE OF PURCHASE: _____

Rug Doctor

Founded by a professional carpet cleaner in 1972, Rug Doctor began with machines designed and built specifically for professional use. Shortly after, the brand introduced the first hire program, making professional-grade carpet cleaning machines accessible to the public. Over 50 years later, Rug Doctor has become a household name, continuing to lead the industry in hire systems with its powerful and innovative products.

SAFETY INSTRUCTIONS

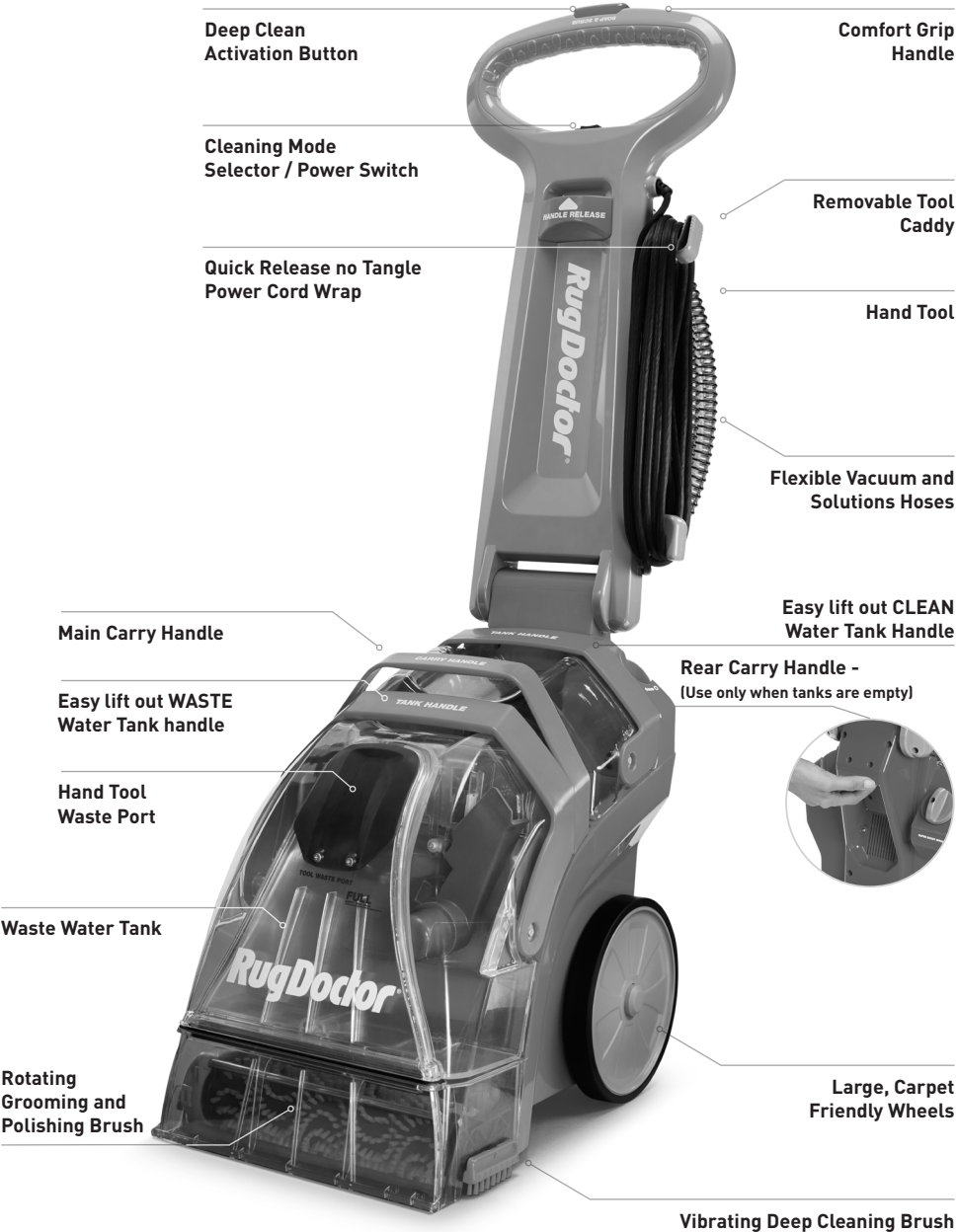


WARNING – to reduce the risk of fire, electric shock, injury or property damage:

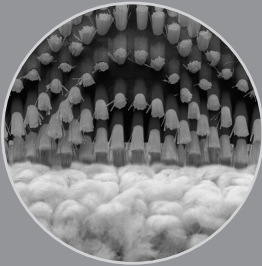
Please read all instructions before using. When using an electrical appliance, basic precautions should always be followed, including the following:

- To prevent scalding or burns, exercise caution when filling the clean water tank with hand-hot tap water. Do not use boiled or microwaved water in the machine.
- Do not leave the machine unattended when plugged in or while it is on. Unplug from the power outlet when not in use and before cleaning or servicing.
- To reduce the risk of fire and electric shock due to internal component damage, use only Rug Doctor or recommended cleaning products that are intended for use in the machine.
- This appliance is not intended for use by individuals (including children) with reduced physical, sensory, or mental capabilities, or those lacking experience and knowledge, unless they have been given supervision or instructions on the proper use of the appliance by a person responsible for their safety.
- Use only as described in this User Guide.
- Do not use with damaged power cord or plug. If the power cord is damaged, it must be replaced by the manufacturer, or its service agent in order to avoid a hazard.
- The power cord should not be used to pull or carry the machine, used as a handle, exposed to heated surfaces or pulled around sharp edges or corners.
- Do not unplug by pulling on power cord. To unplug, grasp the plug not the cord.
- Do not handle plug or machine with wet hands.
- Do not put any object into openings. Do not use if any opening is blocked; keep free of dust, lint, hair, and anything that may reduce air flow.
- Keep hair, loose clothing, fingers, and all parts of the body away from openings and moving parts.
- Turn off all controls before unplugging.
- Use extra care when cleaning on stairs.
- Do not use to pick up anything that is burning or smoking, such as cigarettes, matches or hot ashes.
- Do not use to clean up flammable or combustible liquids or materials, such as petrol, solvent, or any caustic or toxic substances like bleach, ammonia, toilet or drain cleaner.
- Use only on surfaces moistened by cleaning process or small spills. Do not place or submerge the machine in standing water or try to clear flooded areas.
- The use of an extension cord is not recommended. Failure to follow the foregoing instructions may expose the user to the possibility of electric shock, personal injury and/or death.
- When the clean water tank runs out stop using and follow the instructions to refill.
- Dispose of dirty water responsibly into a toilet or outside drain, do not pour into sink, bath or shower.
- Do not operate without tanks or in any manner inconsistent with the above warnings or the operating instructions provided in this User Guide.

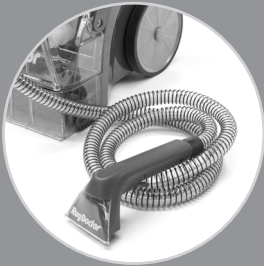
PRODUCT PARTS & COMPONENTS



Your RUG DOCTOR DEEP CARPET CLEANER
has innovative features:



Dual Cross Action Brushes
to clean deep down



Hand Tool
for stairs and upholstery



Hand Tool Caddy System
allows for efficient storage



Integrated Tank Lid &
Cleaning Solution Measure



Tank Handles
for Easy Clean



Super Boost Spray for high-
traffic and heavily soiled areas



Handle Release
for compact storage

GETTING STARTED

Your Rug Doctor Deep Carpet Cleaner is ready to start cleaning right out of the box. No assembly is required. Follow these simple instructions to start cleaning.



DO NOT USE BOILED OR MICROWAVED WATER IN TANK. This can cause scalding, burns, or damage to the machine. Always check for colourfastness. Do not over wet carpet or rug. Use luke warm water on wool and wool blend carpets. **DO NOT USE** on natural fibre, silk or pure wool oriental rugs, hand loomed wool rugs, braided rugs, sisal, sea grass matting or jute carpets or rugs, silk Haitian cotton, brushed corduroy, leather, non-colourfast fabrics, berber, Flotex, Ryalux carpets, wood effect laminate flooring. Using the machine on these materials may cause damage and void the warranty.

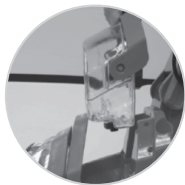
Do not walk on wet carpet.



- 1** Using the **HANDLE RELEASE** raise the handle to a comfortable position; it will click into the nearest locking position. You will need to keep the front nozzle in contact with the carpet at all times when pulling the machine backwards

2 Fill the **CLEAN WATER TANK**

- a. Remove the **CLEAN WATER TANK** by gripping the tank handle and lifting straight up
- b. Loosen the **TANK LID** by turning anti-clockwise and remove from the machine, set aside
- c. Fill the tank with hand-hot tap water to the '**CLEAN WATER FILL LINE**'. Use luke warm water only on wool or wool mix carpets.
- d. The **TANK LID** is also the Carpet Cleaner/Upholstery Cleaner measure. Fill the lid with Rug Doctor or approved cleaning solution to the desired level. For normal soiled carpets fill up to the 60ml mark and for heavily soiled carpets fill up to the 120ml mark.
- e. Pour the cleaning solution into the **CLEAN WATER TANK** and replace the lid. Turn clockwise to tighten.
- f. Place the **CLEAN WATER TANK** back into the machine, making sure it is secure.
- g. Check the black **POWER SWITCH** on the handle to make sure it is in the middle "OFF" position. This switch is also the cleaning mode selector.
- h. The **POWER CORD** will come wrapped and tied. Release the **POWER CORD** and plug into a power outlet.



NOTE: The machine has been designed with convenient rotating **POWER CORD WRAP HOOKS** to store the power cord on board the machine. THE **POWER CORD WRAP HOOKS** on the handle rotate to easily release the power cord.

CLEANING CARPETS

You're now ready to deep clean your carpets and rugs.

SUPER BOOST CLEANING

Not every carpet needs the same level of deep clean, some need a SUPER BOOST. Use the 'SUPER BOOST SPRAY' setting on the machine for an extra boost in cleaning heavily soiled and high-traffic areas.

- 1 Use the SUPER BOOST SPRAY selector to choose your desired level of deep cleaning.
 - a. SUPER BOOST "OFF": For lightly soiled carpets set the SUPER BOOST SPRAY on the machine to "OFF". The machine will only then spray cleaning solution onto the carpet under the machine. As you pull the machine backwards, you'll see the dirty solution from the carpet being suctioned into the machine.
 - b. SUPER BOOST "ON": For moderately/heavily soiled or high-traffic carpets set the SUPER BOOST SPRAY selector on the machine to "ON". The machine will spray additional cleaning solution from the "SUPER BOOST SPRAY" nozzle in advance of the machine clean.
- 2 Position the machine on carpet and push the POWER SWITCH down toward the "CARPET" setting.
- 3 Press the "DEEP CLEAN" button on the top of the handle while pulling the machine slowly and steadily **BACKWARD** in a straight line. You will see the SUPER BOOST SPRAY lifting the dirt in advance of the machine clean.
- 4 Release the "DEEP CLEAN" button approximately 2 steps before ending each pass to stop cleaning solution as there will be no vacuuming for the very last part of the run.
- 5 Tilt the machine back and push it forward to the beginning of the next run to start a new backward cleaning pass. Pushing the machine forward to clean your carpet may damage the machine and void your warranty.
- 6 To clean the area where you stopped the run, position the machine at right angles to the cleaning paths you have already completed and repeat the above.

DUAL ACTION CROSS BRUSHES

Your Rug Doctor Deep Carpet Cleaner uses DUAL CROSS ACTION BRUSHES. Two brushes under the machine deep clean all sides of the carpet fibres. This innovative technology deep cleans each carpet fibre, then grooms and polishes the carpet to restore bounce and provide a plush looking result – all in one cleaning pass.

- 1 With the machines POWER CORD plugged into a power outlet and outlet turned on, turn the machine "ON" by pressing the POWER SWITCH down toward the "CARPET" setting.
- 2 The DUAL CROSS ACTION BRUSHES are activated by the red "DEEP CLEAN" button on the top of the handle.
 - a. The Vibrating Oscillating Brush scrubs all sides of the carpet pile, deep cleaning each fibre from the base of the carpet up.
 - b. The Roller Brush grooms and polishes the carpet, restoring its bounce and leaving it looking clean and plush.

NOTE: Your Rug Doctor Deep Carpet Cleaner also features Side Brushes for edge cleaning along carpets.

CLEANING WITH THE HAND TOOL



- 1** Unwrap the HAND TOOL from the caddy




- 2** Open the TOOL VACUUM CONNECTION by pulling open the black rubber flap.



- 3** Insert the HAND TOOL vacuum connection horizontally into the WASTE WATER TANK by lining up the "O" icons on the tank and the TOOL. If there is any problem fitting this in it is only because it is not being pushed at the correct angle.



- 4** Lock the TOOL into place by rotating to the right, the  icon will be straight up.



- 5** With the machine handle tilted as far back as possible to allow easy access, connect the red braided hose connector to the "TOOL SPRAY CONNECTION" located on the side of the top of the machine. The O-ring on new machines can be a tight fit so you may need to wiggle it from side-to-side while pushing firmly down in order to ease the coupling into the connection. Lock the tool into place by rotating clockwise. After a few uses the connection will ease up.

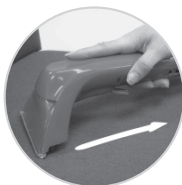


- 6** You're now ready to deep clean your upholstery, mattresses, stairs, fabric car interiors and carpet spots and stains. Turn the machine **ON** by pressing the **POWER SWITCH** down toward the **"TOOL"** setting.



- 7** Position the **HAND TOOL** well in front of the area or stain you want to deep clean.

- 8** Squeeze the **"SPRAY"** trigger on the handle to begin cleaning.



- 9** While squeezing the trigger, move the tool back and forth over the area you want to clean, making sure to press the suction nozzle down into the surface.

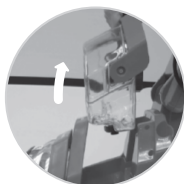
- 10** Release the **"SPRAY"** trigger when the area is cleaned. Excess water can be removed by making additional passes with the tool without squeezing the **"SPRAY"** trigger. This may allow faster drying.



- 11** Leave the machine on for 15 seconds after cleaning to allow for all of the dirty solution to be collected into the **WASTE WATER TANK**.

CLEANING UPHOLSTERY

- 1 Position the FOLD DOWN HANDLE as far back as possible to allow easy access to the TOOL SPRAY CONNECTION.



- 2 Fill the CLEAN WATER TANK

- a. Remove the CLEAN WATER TANK by gripping the TANK HANDLE and lifting straight up
- b. Loosen the TANK LID by turning anti-clockwise and remove from the machine, set aside
- c. Fill the tank with hand-hot tap water to the "CLEAN WATER FILL LINE".
- d. The TANK LID is also the "Carpet cleaner/Upholstery cleaner" measure. Fill the lid with Britex Upholstery Cleaner to the 120ml mark.
- e. Pour the Britex Upholstery Cleaner into the CLEAN WATER TANK and replace the lid. Turn clockwise to tighten.
- f. Place the CLEAN WATER TANK back in the machine, making sure it is secure.



- 3 Rotate the POWER CORD WRAP HOOK on the handle to release the POWER CORD. Unwrap the POWER CORD and plug into power outlet. Making sure the POWER SWITCH is in the "OFF" position.



EMPTYING THE WASTE WATER

- 1 Empty the WASTE WATER TANK before the dirty water reaches the "Full Line"



- 2 Turn off the machine by pressing the POWER SWITCH into the middle setting.
- 3 Remove the WASTE WATER TANK from the machine by gripping the TANK HANDLE and lifting straight up.



- 4 Unscrew the WIDE OPENING LID and pour out the dirty water. DO NOT open the black rubber tool vacuum connection flap.



- 5 Rinse inside of the WASTE WATER TANK and replace the WIDE OPENING LID, firmly tighten the lid.
- 6 Place the tank back on the machine by setting it straight down on the base until it is secure.



REFILLING THE CLEAN WATER TANK

- 1 When the unit no longer sprays water out of the sides of the machine, check the CLEAN WATER TANK to see if it's empty.



- 2 If the CLEAN WATER TANK is empty, turn off the machine by pressing the POWER SWITCH into the middle setting.
- 3 Remove the CLEAN WATER TANK by gripping the TANK HANDLE and lifting straight up.



- 4 Loosen the TANK LID by turning anti-clockwise and remove from the machine, set aside. Fill the tank with hand-hot water to the "CLEAN WATER FILL LINE".



- 5 The TANK LID is also the "Carpet Cleaner/Upholstery Cleaner" measure. For normally soiled carpets fill up to the 60ml mark. For heavily soiled carpets fill up to the 120ml mark.
- 6 Pour the cleaning solution into the CLEAN WATER TANK and replace the lid. Turn clockwise and tighten.
- 7 Place the CLEAN WATER TANK back in the machine, making sure it is secure.

CLEANING UP

After you've used your RUG DOCTOR DEEP CARPET CLEANER follow these steps for quick clean-up and storage of your machine.



1 Turn the machine off by pressing the POWER SWITCH to the middle "OFF" setting.

2 Turn off the power outlet. Unplug the POWER CORD from the outlet and wrap the POWER CORD around the ROTATING CABLE HOOKS and secure with the cable tidy clip.

3 Empty the CLEAN WATER TANK (if necessary), rinse, dry and replace on the machine.



4 Empty the WASTE WATER TANK and then rinse, clean and dry before placing back on the machine. The WIDE OPENING LID is designed to allow your hand to get inside in order to thoroughly clean, rinse and dry so you are storing a fresh and clean tank.

5 Use the HANDLE RELEASE lever to fold down the handle for convenient and compact storage.

TIP: Let the machine brushes dry before putting the machine away

HAND TOOL CADDY

The RUG DOCTOR DEEP CARPET CLEANER HAND TOOL slides easily on and off the back of the machine hand, the HAND TOOL CADDY can hang on a hook when not in use.



1 Insert the large connector with the hose pointing up into the clips.



2 Wrap the tool hose clockwise around the caddy 3 times.



3 Insert the HAND TOOL into place with the brush facing out. Secure the HAND TOOL with the clips locking it in place.

4 Insert the small connector into the opening directly above the HAND TOOL.

TROUBLESHOOTING

Use this section to help resolve any issues you experience with your machine.

ISSUES	POSSIBLE REASON	FIX
No Power	<ul style="list-style-type: none"> Power Cord not plugged in Power outlet not switched on Cleaning mode not selected 	<ul style="list-style-type: none"> Plug power cord into power outlet Turn on power outlet switch Select CARPET or TOOL at the POWER SWITCH
No / Low Spray	<ul style="list-style-type: none"> Not pressing spray trigger Clean Water tank is empty or low Clean Water tank is not installed correctly Spray is clogged 	<ul style="list-style-type: none"> Press spray trigger Fill Clean Water tank with water and cleaning solution Lift up Clean Water tank and place back in position Clean spray tip
No / Low Suction	<ul style="list-style-type: none"> Dirty Water tank is full Dirty Water tank is not installed correctly 	<ul style="list-style-type: none"> Empty Dirty Water tank Lift up Dirty Water tank and place back into position
Rotating Brush Not Rotating	<ul style="list-style-type: none"> Deep Clean Button is not being pressed Debris lodged in brush roll 	<ul style="list-style-type: none"> Press Deep Clean button on handle Turn machine off at both POWER SWITCH and power outlet. Remove obstruction and turn machine back on to reset.
Vibrating Oscillating Brush Not Moving	<ul style="list-style-type: none"> Deep Clean Button is not being pressed Debris lodged in brush 	<ul style="list-style-type: none"> Press Deep Clean button on handle Turn machine off at both POWER SWITCH and power outlet. Remove obstruction and turn machine back on to reset.
No / Low Spray from Hand Tool	<ul style="list-style-type: none"> Not pressing spray trigger Red braided hose connector is not installed correctly into the Tool Spray Connection Clean Water tank is empty or low Clean Water tank is not installed correctly 	<ul style="list-style-type: none"> Press spray trigger Make sure the symbols are aligned when installing and push down firmly. Fill Clean Water tank Lift up Clean Water tank and place back into position
No / Low Suction from Hand Tool	<ul style="list-style-type: none"> Dirty Water tank is full Dirty Water tank is not installed correctly Tool Vacuum connector is not fitted horizontally into Tool Vacuum connection 	<ul style="list-style-type: none"> Empty Dirty Water tank Lift up Dirty Water tank and place back into position Make sure the symbols are aligned when installing and push down firmly

Should you require additional assistance contact:

CUSTOMER SERVICE

Phone: 1800 804 973

Email: customerservice@rugdoctor.com.au

Website: rugdoctor.com.au

Monday – Friday:

Saturday & Sunday:

Public Holidays:

Closed:

9:00am – 5:00pm

10:00am – 5:00pm

10:00am – 5:00pm

Good Friday

Christmas Day

Boxing Day

WARRANTY AGAINST DEFECTS

Rug Doctor Machines and Tools are manufactured, tested and inspected in accordance with the highest standards. We provide a limited warranty period (see Warranty Against Defects Period below) to give you peace of mind. This applies in addition to any statutory rights which remain unaffected. You are welcome to contact our Customer Service helpline on 1800 804 973 Monday to Friday (9:00am to 5:00pm) to discuss any warranty information.

This warranty is intended for Machines and Upholstery Tool used for ^domestic and private use and does not cover commercial* usage.

WHAT DOES THIS WARRANTY AGAINST DEFECTS COVER?

Our goods come with guarantees that cannot be excluded under the Australian Consumer Law. You are entitled to a replacement or refund for a major failure and for compensation for any other reasonably foreseeable loss or damage. You are also entitled to have the goods repaired or replaced if the goods fail to be of acceptable quality and the failure does not amount to a major failure.

This Warranty Against Defects ("Warranty Against Defects") does not impact, limit, reduce or change (or purport to impact, limit, reduce or change) any of the statutory warranties and must be read separately. Under this Warranty Against Defects, we warrant as follows:

1. Carpet Machine Hire Pty Ltd ("Carpet Machine Hire") guarantees to the original purchaser for the Warranty Against Defects Period, the machine or wand supplied by Carpet Machine Hire and every component part thereof (collectively, "Machine" and/or "Upholstery Tool") shall be free from material defects. However, this guarantee is subject to Clauses 1.2, 1.3 and 1.4 and does not apply in the circumstances described in Clause 2.1
2. Subject to Clause 2.1, you can make a claim under this Warranty Against Defects if:
 - a) you give notice (in accordance with the "How Do I Claim Under This Warranty Against Defects" section (below)) to Carpet Machine Hire during the Warranty Against Defects Period, and
 - b) you (if asked to do so by Carpet Machine Hire) return the Machine and/or Upholstery Tool to Carpet Machine Hire's place of business or an alternative address as instructed by Carpet Machine Hire, and
 - c) where relevant Carpet Machine Hire is given a reasonable opportunity of examining the Machine and/or Upholstery Tool.

Once Carpet Machine Hire receives your Machine and/or Upholstery Tool, it will be assessed. If your Machine and/or Upholstery Tool suffers a defect within the Warranty Against Defects Period, Carpet Machine Hire will either repair or replace the Machine and/or Upholstery Tool without further charge or refund you (either in part or in full).

3. The guarantee at Clause 1.1 shall apply to any replacement Machine and/or Upholstery Tool (for the Warranty Against Defects Period from the date of delivery of the replacement Machine and/or Upholstery Tool) and any repaired Machine (for the original Warranty Against Defects Period from the original date of purchase and delivery of the Machine and/or Upholstery Tool) supplied by Carpet Machine Hire.
4. This Warranty Against Defects is given in addition to and does not affect any rights and remedies available to you under Australian Consumer Law.

WARRANTY AGAINST DEFECTS PERIOD

Product	Model Number	Warranty Against Defects Period
Rug Doctor X3 Deep Cleaner	95521	1 year
Rug Doctor Spot Cleaner	93306	2 years
Rug Doctor Deep Cleaner	93170	2 years
Rug Doctor Pet Spot Cleaner	93407	2 years
Rug Doctor FlexClean	93391	2 years
Rug Doctor Upholstery Tool	91647	1 year

WHAT THE WARRANTY AGAINST DEFECTS DOES NOT COVER

- 2.1 Subject to any statutory rights which remain unaffected, the guarantee at Clause 1.1 does not apply to any defect in the Machine and/or Upholstery Tool arising from:
- a) any further use of the Machine and/or Upholstery Tool made by you or any third party after giving notice in accordance with Clause 1.2
 - b) your failure, or that of any third party, to follow Carpet Machine Hire's reasonable oral or written instructions (including but not limited to the User Guide supplied with the Machine) as to the proper storage, use and maintenance of the Machine (as to the latter, for best operating efficiency and cleaning use of only Carpet Machine Hire's cleaning products is recommended)
 - c) any alteration or repair, or attempted alteration or repair of the Machine and/or Upholstery Tool, by you or any third party without written consent of Carpet Machine Hire
 - d) fair wear and tear, wilful damage, negligence by you or any third party, accident, improper use and abuse, or abnormal storage or working conditions; or
 - e) use by you or any third party of the Machine and/or Upholstery Tool in any way or at any time for rental or hire purposes.

EXPENSES

If a Machine and/or Upholstery Tool is returned to Carpet Machine Hire for repair under the guarantee at Clause 1.1, Carpet Machine Hire will pay these delivery charges. However, you will be responsible for paying any delivery charges for Carpet Machine Hire sending the Machine and/or Upholstery Tool back to you if the Machine and/or Upholstery Tool is not considered by Carpet Machine Hire, acting reasonably, to have a material defect.

Subject to law, you will be responsible for paying any delivery charges for sending the Machine and/or Upholstery Tool to and from Carpet Machine Hire for repairs occurring outside of the Warranty Against Defects Period.

HOW DO I CLAIM UNDER THIS WARRANTY AGAINST DEFECTS?

To obtain warranty assistance, contact the Carpet Machine Hire Customer Support team using the details below. Carpet Machine Hire will require the following information in order to assist you: your name, address and telephone number, model number, serial number, proof of purchase showing the date and place of purchase and a detailed explanation of the nature of the problem. Carpet Machine Hire will review all the facts involved and advise you as to the correct procedure. Carpet Machine Hire recommends you keep the original carton and packaging materials.

Contact information:

CARPET MACHINE HIRE PTY LTD

ABN: 80 093 729 787

Unit 10 | 25-37 Chapman Street Blackburn North
VIC 3130

Phone: 1800 804 973

(Monday to Friday 9:00am to 5:00pm AEST/AEDT)

Email: customerservice@rugdoctor.com

Website: rugdoctor.com.au

AFTER THE WARRANTY AGAINST DEFECTS PERIOD EXPIRES

After the Warranty Against Defects Period expires, Carpet Machine Hire agrees to carry out any maintenance of the Machine and/or Upholstery Tool in a prompt and efficient manner. Subject to law, you agree to pay a designated hourly rate for maintenance plus any applicable costs including (without limitation) replacement parts and freight costs.

^ Domestic and private use only. You agree not to use the Machine or Upholstery Tool for any commercial, business or re-sale purposes. IN the event that you do, Carpet Machine Hire does not accept any liability to you for any loss of profit, loss of business, business interruption, or loss of business opportunity to the fullest extent permissible by law.

* Commercial use applies when Machine or Upholstery Tool is being used in a non-domestic capacity.

